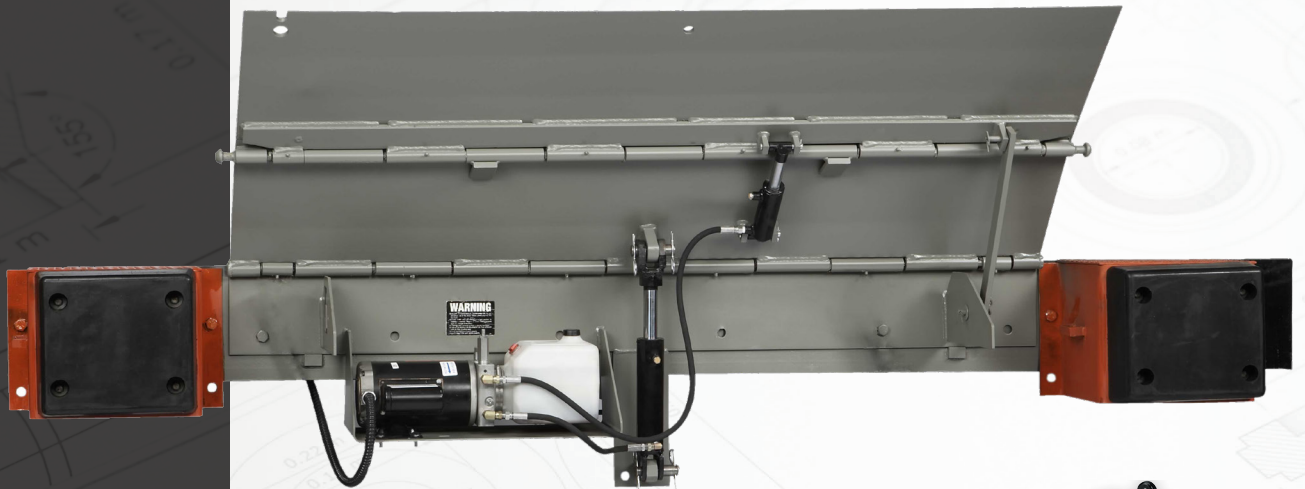


Edge of Dock HED-Series Hydraulic Edge of Dock

The safest and easiest-to-operate hydraulic edge of dock leveler



20K - 35K
CIR | 66" - 84"
WIDTH

FEATURES

- NEMA, 12 push-button control panel
- Manual activation in case of power failure
- Cold, rolled-steel hinge pins for added strength and long life
- Milled lip edge for smooth tire rollover
- Grease fittings throughout
- High-strength steel safety treadplate
- Full width distribution bar for extra durability
- Secondary gussets for added strength and extended life
- Heavy-duty bumper block assemblies with Tuf-Cord rubber bumpers 4"x12"x13"
- Bumper projection 15"
- Design and manufactured in the USA

Edge of Dock

HED-Series Hydraulic Edge of Dock

20K - 35K
CIR

66" - 84"
WIDTH

Over 60 years ago, DLM® invented the edge-of-dock leveler and quickly set the standard for the industry. Today, the DLM HED Series sets a new standard. It is the absolute state-of-the-art in hydraulically operated edge-of-dock levelers. The DLM HED is yet another reason why there are more DLM edge-of-dock levelers in service than those of all other companies combined.

DLM's HED edge-of-dock levelers mount to the dock face and provides a recommended working range of +/-3" and maximum operating range of +/-5" above and below dock level.

STRUCTURALLY SUPERIOR

- Milled lip edge for smooth tire rollover
- Leveler lip and deck are constructed with high-strength 55,000 PSI min. yield, steel safety treadplate
- Two steel gussets for added strength and extended life
- Full width distribution bar for extra durability
- Deck construction is capacity dependent to insure your loading bridge matches the demands of the facility

BUMPER OPTIONS

- Properly designed dock bumpers helps protect the deck plate and building from the approaching truck
- Constructed of formed steel and incorporate a full height internal gusset for extra support
- Feature 4" thick Tuf-Cord rubber bumper
- Every leveler is shipped standard with 12" x 13" heavy-duty bumper blocks
- Optional sliding bumpers that rise as the truck is being unloaded - thus reducing wear and tear
- Optional 18" tall steel-faced or laminated bumpers

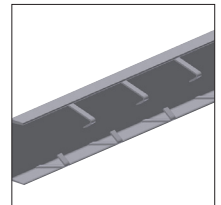
SIMPLE PUSH-BUTTON CONTROL

- Non-metallic, NEMA, 4 single push-button control
- Control components are UL listed or recognized
- Overload protection for motor is standard
- 115 volt 1-phase motor



INSTALLATION METHOD

- For new construction, a flush or recessed 8" - 12" embed channel (shown) is strongly recommended. Unit is then welded to the embed channel in the foundation wall. For existing docks without preferred embed channel, optional ramp approach plates or formed angles are available to maximize the strength of installation.



W194N11481 McCormick Dr. | Germantown, WI 53022
dlmdocks.com | sales@dlmdocks.com
800-643-5424



dlmdocks.com

Designed, Engineered, and Manufactured in the U.S.A.
© 2024 Systems, LLC/DLM
Consistent with our policy of continuing product improvement, we reserve the right to change product specifications without notice or obligation.

HED EOD 12/2024

A Division of Systems, LLC

DLM
DOCK LEVELER
MANUFACTURING

Value Engineered
Dock Levelers